

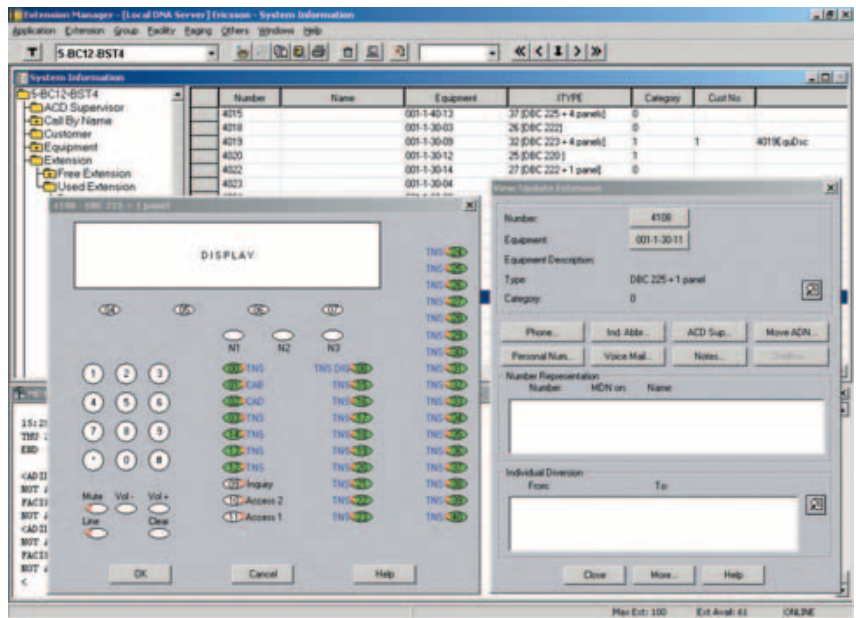
D.N.A. Extension Manager 12.1



D.N.A. Extension Manager is an application which enables the simplification of day-to-day moves, adds and changes of MD110 telephone extensions and facility data.

Using a graphical user interface (GUI), Extension Manager reduces complex functionality to provide system administrators with a highly effective administrative tool. Administrators can perform tasks related to extensions more easily, quickly, and efficiently than using a standard command line interface.

- Window-based GUI configuration, with drag-n-drop, point and click features
- Configure BC10, BC11 and BC12/12.1 extensions and mobility features
- View, add, delete and change:
 - Extensions, groups, abbreviated numbers,
 - Categories, authorization codes, hot lines, ACD/ANCD
- Create custom templates for standardized phone set-up
- Setup, configure and modify OneBox users
- Perform changes on-line or via batch job
- Extension configuration possible from other applications via Extension Link interface



D.N.A. Extension Manager 12.1

D.N.A. Extension Manager supports analog, digital, generic, ISDN, data and cordless extensions as well as IP and Mobile extensions. It automatically keeps track of both free and used extension data as well as feature and group information. Performing moves, adds and changes is simply a matter of dragging and dropping features and parameters onto the relevant data fields. Extension Manager also supports administration of OneBox voicemail and unified messaging accounts all through one single interface.

D.N.A. Extension Manager is a true multi-user application allowing multiple sessions to be opened towards one or more MD110 PBX nodes. An Extension Manager user is also able to access several D.N.A. Server databases one at a time.

User benefits

- Perform adds, moves and changes immediately or when needed via batch jobs
- No external costs needed for moves, adds and changes
- Uses a simple graphical user interface (GUI) instead of specific PBX command syntax
- Provides an overview of occupied and free resources for early planning

Features

Usability

- Full Microsoft Windows (GUI) with common D.N.A. look and feel
- Spreadsheet interface for information viewing

- Drag-and-drop support for data manipulation
- Online documentation for MD110 parameters
- Online display of command feedback from MD110
- Easy-to-use dialogues
- Tree hierarchy display of system information
- Templates may be defined for common configurations
- Simultaneous multiple-user access
- User-privilege definition to enable specific functionality for different users
- Ability to access and update data on multiple D.N.A. Servers
- Daily system activities held in log files
- Multiple MD110 Node configuration from any Extension Manager client
- Complete printout of system information

MD110 interworking

- Data Synchronization of single LIMs, single boards and single extensions from the MD110 Support (MDS) and D.N.A. Extension Manager
- Online and offline mode towards PBX
- Batch mode for offline configuration of the MD110
- Displays board suffix and revision when information is viewed
- File transfer capability

MD110 feature configuration

Extensions

View/change/add/delete:

- Digital Extensions, including function key assignments
- Analog Extensions
- Data Extensions
- Generic Extension
 - Mobile Extension
 - IP Extension
 - Short Message Service
- DNIS data configuration
- Dial by Name support for display in Digital Telephones
- Leading Zero extensions
- Choice of Language

OneBox Configuration

View/change/add/delete:

- Mailbox Number
- Set message waiting indicator
- Clear Message Waiting Indicator
- Message Retention – *Unlimited or Number of days*
- Callouts – *In house, Local and Long Distance*
- Message Management Access
- Setup Tutorial Required
- Name and Department
- Primary Extension
- Alternate extensions – *Secondary Voice Extension, Fax Extension, Operator Extension, Unknown Extension*
- E-mail parameters – *Type (User e-mail type, none, access, store), Name (User display name), Address (User address), Logon ID, Logon Password, Server ID (e-mail server ID)*
- Distribution lists that the subscriber is a member of
- Message Presentation Options

Groups

View/Change/Add/Delete:

- Common Bell
- Group Hunting
- Call Pickup
- Data
- Group Do Not Disturb
- ACD Agent groups
- ANCD groups

Facilities

View/Change/Add/Delete:

- Common Abbreviated Number
- Common Categories
- Individual Categories
- Authorization Codes
- Account Codes
- Individual Abbreviated Numbers
- Hot Lines
- ANCD Management
- ACD Supervisor management functions
- Personal Number

Interfaces

- ExtensionLink Interface to enable extension configuration from external applications. With an OCX (OLE Custom control) based interface, it is possible to enable manipulation of extension data from non-D.N.A. application
- Interworking with Directory Manager using transaction register to maintain accurate and synchronized information between the two applications

Technical information

Hardware

All D.N.A. client installations require:

- Pentium III 450 MHz
- 500 MB Hard Drive
- 128 MB RAM
- Minimum 1024x768 resolution
- Network Card and TCP/IP network protocol
- Microsoft Windows 2000, Windows XP or Windows 2003
- SQL Client Access License to SQL Server or MSDE

Communication

D.N.A. Extension Manager clients can connect to D.N.A. Servers via Ethernet, TCP/IP or dial up RAS connection.

Connection to the MD110 is achieved via Ethernet using the Network Interface Unit (NIU) or V.24 connections.

Compatibility

D.N.A. Extension Manager 12.1 is compatible with D.N.A. Server 5.2 and D.N.A. Directory Manager 5.2 and with MD110 software releases BC10, BC11 and BC12/12.1.

Visit us on our website
www.ericsson.com/enterprise

Asia Pacific

Ericsson Enterprise
3420 Persiaran Sepang
63000 Cyberjaya
Selangor Darul Ehsan
MALAYSIA
Phone: +60 3 8314 6000
enterprise.asiapacific@ericsson.com

Nordic

Ericsson Enterprise
LM Ericssons väg 8
SE-126 25 Stockholm
SWEDEN
Phone: +46 8 568 67 000
enterprise.nordic@ericsson.com

Americas

Ericsson Enterprise
6300 Legacy Drive
Plano TX 75024
USA
enterprise.americas@ericsson.com

Europe

Ericsson Enterprise
Avenue du Bourget 44 Bourgetlaan
B-1130 Brussels
BELGIUM
Phone: +32 2 745 12 11
enterprise.europe@ericsson.com

Central Europe, Middle East & Africa (CEMA)

Ericsson Enterprise
LM Ericssons väg 8
126 25 Stockholm
SWEDEN
Phone: +46 8 568 67 000
enterprise.cema@ericsson.com

Produced in February 2004
EN/LZT 102 2356 RI
© Ericsson Enterprise AB 2004